

$\text{♩} = 60$ [Score is in F]

A Prerecorded Instruments Play

B **C** **D** **E**

Hn. Fr. *poco **f** mournful*

Hn. M. *poco **f** mournful*

Pno. N. *pp* *8va*

Fl. *ppp*

Hn. *ppp*

Vc. *ppp*

Pno. *ppp* *ppp* *pppp* *pppp*

A Prerecorded Instruments Play $\text{♩} = 60$ *8va* *ppp* *ppp* *pppp* *pppp*

B **C** **D** **E**

11

Fl. F. **F** **G** *pp sempre legato*

Hn. M. *ppp molto legato*

Fl. N. *ppp sempre legato*

Pno. N. (8)

Fl. *ppp* *ppp* *ppp*

Hn. *pppp* *pppp* *pppp*

Vc. *pppp* *pppp* *pppp*

Pno. **F** **G** *ppp* *ppp*

16

Fl. F.

Fl. N.

Fl.

Hn.

Vc.

17

Fl. F.

Fl. N.

Fl.

Hn.

Vc.

Pno.

ppp *sempre legato*

pp *sempre legato*

ppp *sempre legato*

pppp

pppp

ppp

ppp

18

Fl. F.

Fl. N.

ppp sempre legato

The image shows a musical score for two flutes, Fl. F. and Fl. N., starting at measure 18. The Fl. F. part is written in treble clef and features a melodic line with some rests, while the Fl. N. part plays a continuous sixteenth-note accompaniment. The Fl. F. part includes a dynamic marking of *ppp* and the instruction *sempre legato*.

[illegible]

20

Fl. M.

ppp sempre legato

Pno. N.

8^{va}

Fl.

pppp

Hn.

pppp

Vc.

ppp

Pno.

8^{va}

ppp

The musical score for measures 20-23 is as follows:

- Fl. M. (Measure 20):** Melodic line starting on G4, moving stepwise up to D5, then down to G4. Dynamic: *ppp sempre legato*.
- Pno. N. (Measure 20):** Arpeggiated accompaniment in the right hand, starting on G4 and moving up to D5. Dynamic: *ppp*.
- Pno. (Measure 20):** Arpeggiated accompaniment in the left hand, starting on G3 and moving up to D4. Dynamic: *ppp*.
- Fl. (Measure 20):** Rest. Dynamic: *pppp*.
- Hn. (Measure 20):** Rest. Dynamic: *pppp*.
- Vc. (Measure 20):** Rest. Dynamic: *ppp*.

Measures 21-23 contain similar musical notation for the instruments listed above.

21 $\text{♩} = 66$ Transpose one tone higher

Fl. F.

Vc. F.

Pno. F.

Fl. M.

pppp

pppp

ppp

gliss.

gliss.

15^{ma}

Continues in previous tempo

The musical score for measures 21-24 is as follows:

- Measure 21:** Fl. F. plays a quarter note F#4. Vc. F. plays a half note G2. Pno. F. plays a quarter note F#4. Fl. M. plays a quarter note F#4.
- Measure 22:** Fl. F. plays a quarter note G4. Vc. F. plays a half note A2. Pno. F. plays a quarter note G4. Fl. M. plays a quarter note G4.
- Measure 23:** Fl. F. plays a quarter note A4. Vc. F. plays a half note B2. Pno. F. plays a quarter note A4. Fl. M. plays a quarter note A4.
- Measure 24:** Fl. F. plays a quarter note B4. Vc. F. plays a half note C3. Pno. F. plays a quarter note B4. Fl. M. plays a quarter note B4.

22

Fl. F.

Vc. F.

Pno. F.

Pno. M.

Pno. N.

gliss.

(15)

Transpose up aug 4th

Transposed up major third

15^{ma}

15^{ma}

2/4

2/4

2/4

2/4

2/4

$\text{♩} = 44$ $\text{♩} = 22$

23

Play as in 4th movement

Vc. F.

Pno. F.

Vc. M.

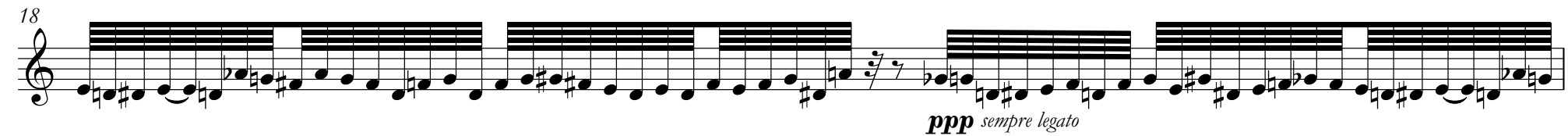
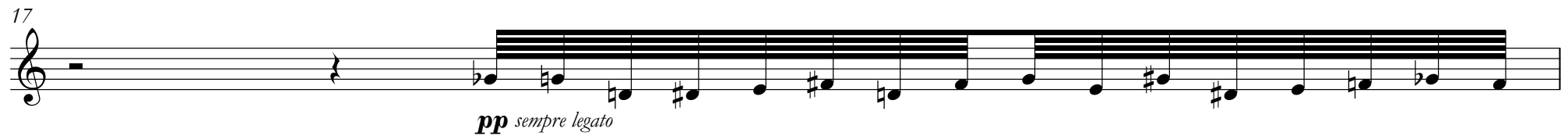
Pno.

pp $\text{♩} = 44$ $\text{♩} = 22$ *attaca*

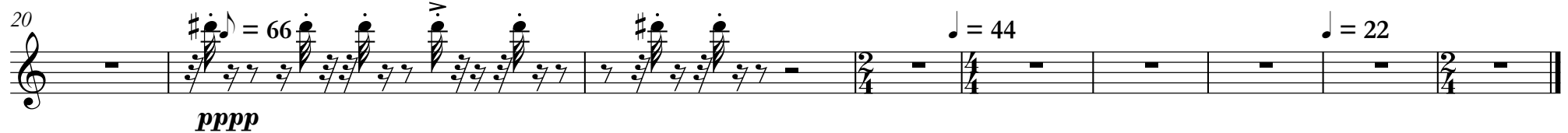
[Score is in F]

2

♩ = 60 Prerecorded Instruments Play



Transpose one tone higher



♩ = 60

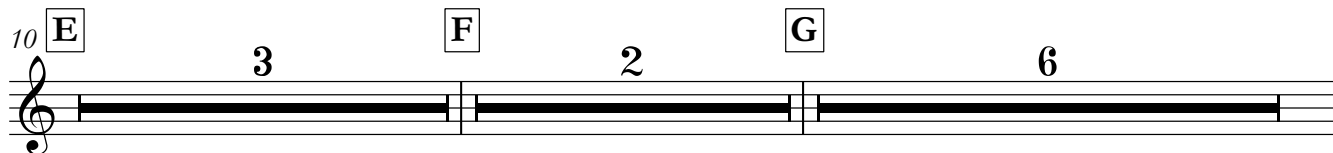
[Score is in F]

2 Prerecorded Instruments Play

2 **A** 3 **B** 2 **C** 2 **D**

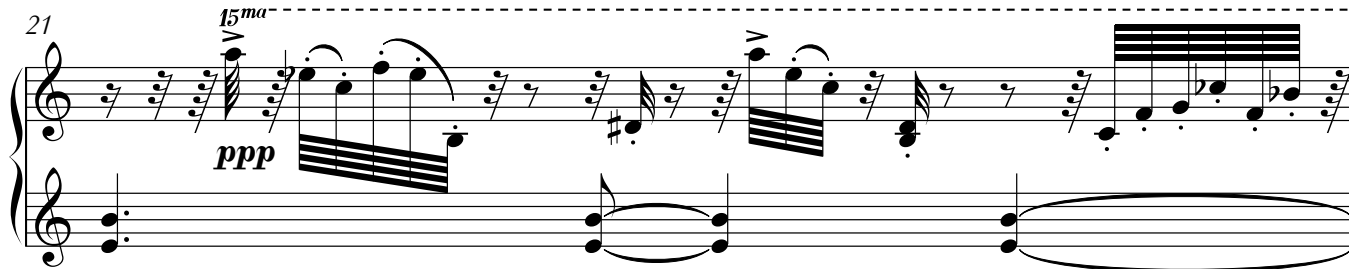


10 **E** 3 **F** 2 **G** 6



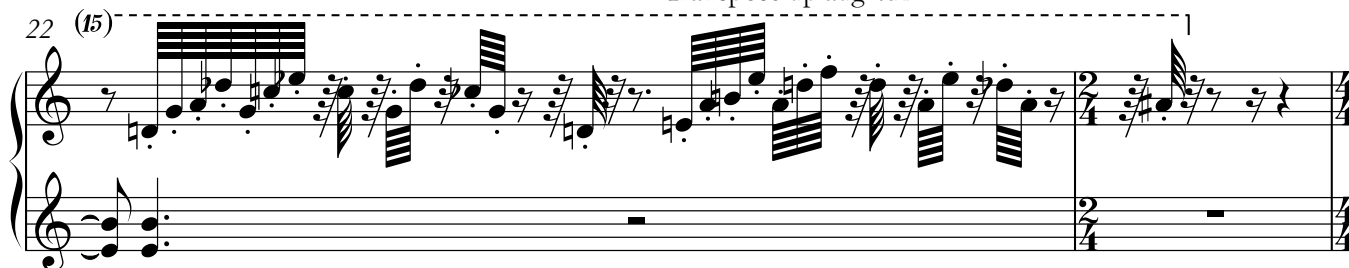
♩ = 66

21 *ppp* 15^{ma}



Transpose up aug 4th

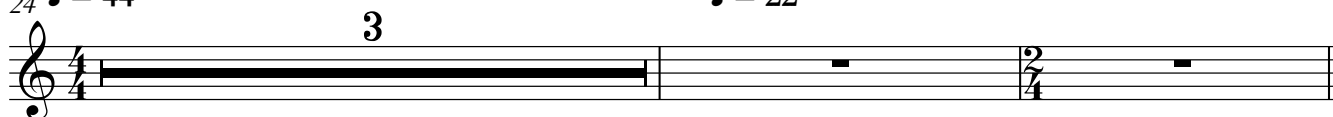
22 (15)



24 ♩ = 44

♩ = 22

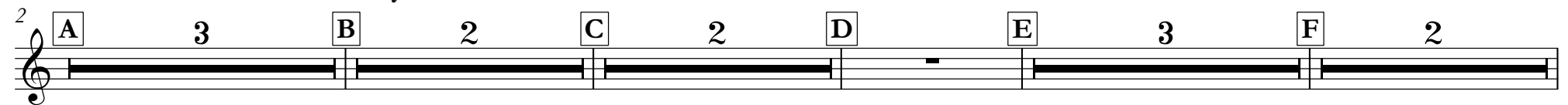
3



2 $\text{♩} = 60$ [Score is in F]

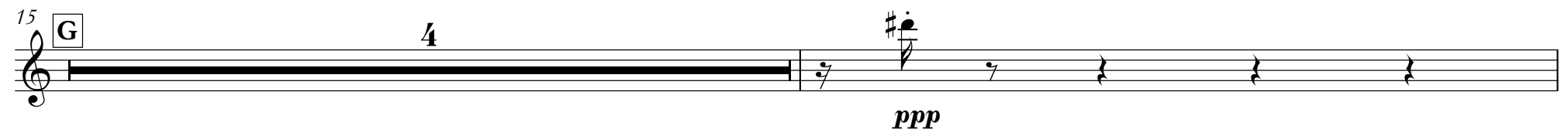
Prerecorded Instruments Play

2 **A** 3 **B** 2 **C** 2 **D** **E** 3 **F** 2



A musical staff in treble clef showing a sequence of notes: A, B, C, D, E, F. Above the staff, the notes are labeled with letters in boxes. Fingerings are indicated by numbers: 3 for A, 2 for B, 2 for C, 2 for D, 3 for E, and 2 for F. The notes are connected by a continuous line.

15 **G** 4 *ppp*



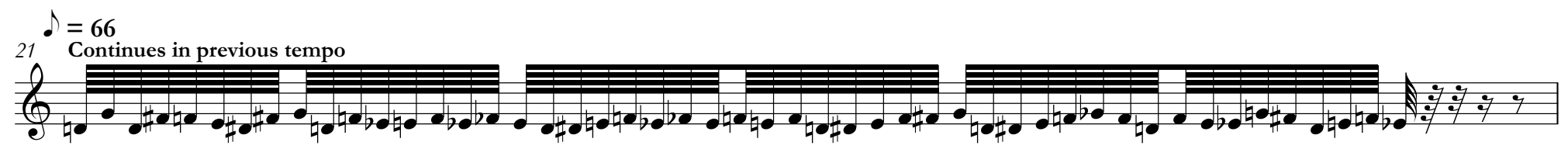
A musical staff in treble clef. It begins with a note G, followed by a 4-measure rest. The dynamic marking *ppp* is written below the staff. The staff ends with a double bar line.

20 *ppp sempre legato*



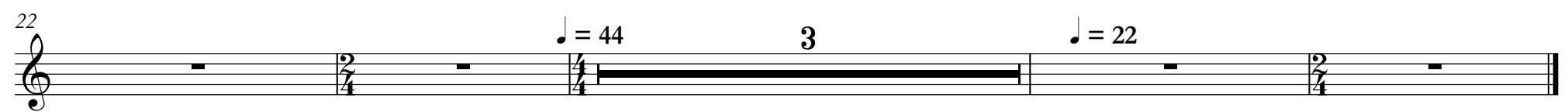
A musical staff in treble clef. It begins with a 4-measure rest, followed by a continuous melodic line. The dynamic marking *ppp sempre legato* is written below the staff. The staff ends with a double bar line.

21 $\text{♩} = 66$ Continues in previous tempo



A musical staff in treble clef. It begins with a tempo change to $\text{♩} = 66$ and the instruction "Continues in previous tempo". The staff contains a continuous melodic line. The staff ends with a double bar line.

22 $\text{♩} = 44$ 3 $\text{♩} = 22$



A musical staff in treble clef. It begins with a tempo change to $\text{♩} = 44$, followed by a 3-measure rest. The tempo then changes to $\text{♩} = 22$. The staff ends with a double bar line.

♩ = 60

[Score is in F]

2 Prerecorded Instruments Play

2 **A** 3 **B** 2 **C** 2 **D**

10 **E** 3 **F** 2 **G** 4

♩ = 66

Transposed up major third

ppp

21 *15^{ma}*

24 ♩ = 44

♩ = 22

3

2 $\text{♩} = 60$ [Score is in F]

Prerecorded Instruments Play

2 **A** 3 **B** 2 **C** 2 **D** **E** 3 **F** 2

15 **G**

ppp sempre legato

16

17

ppp sempre legato

18

19 $\text{♩} = 66$ 2 $\text{♩} = 44$ 3

ppp

27 $\text{♩} = 22$

♩ = 60

[Score is in F]

2 Prerecorded Instruments Play

2 **A** 3 **B** 2 **C** 2 **D**

10 **E** 8^{va} **F** 2

15 **G** 4 4 *ppp* 8^{va} *ppp*

♩ = 66

21 15^{ma}

24 ♩ = 44 2 ♩ = 22